



Marlboro Orthodontics

Fall Edition

340 Maple Street, Suite 205, Marlborough, MA 01752 508-281-5188
111 Boston Post Road, Ste. 106, Sudbury, MA 01776 978-440-7544

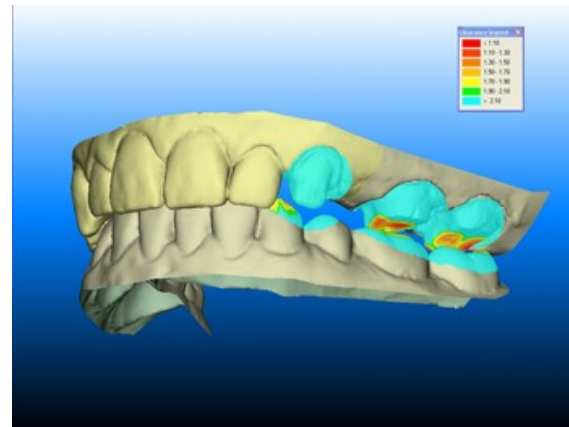
**Share a Smile and win
an Ipod Touch!**

**When you refer a friend to
our practice your name will
be placed in the**

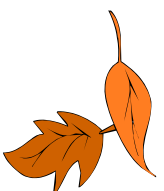
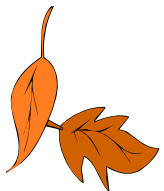


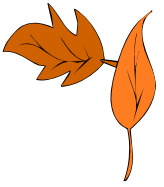
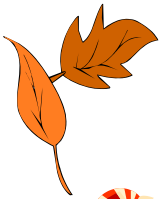
Referral cards can be found at the front desk, take as many cards as you'd like, and give them to friends and family. When they come in you'll be entered to win. We choose one winner each quarter. You may refer as many people as you'd like each quarter. Referring more people means more chances to win!

New Technologies!



Marlboro Orthodontics welcomes our new iTero Digital Scanner! With our new iTero Scanner, Dr. Chen can take a highly accurate digital impressions and in many cases can eliminate using an uncomfortable tray and putty impression. The iTero scanner uses proprietary scanning technology to generate a virtually perfect impression in less time and with less discomfort to our patients.





Halloween Candy Buy Back!



The Halloween Candy Buy Back will be held one day only on Nov. 2nd, from 3-5pm. Bring in your unwanted Halloween candy and receive \$2.00 for every pound (max 10lb per child) Just a reminder, kids, to have fun this Halloween! But, don't forget to stay away from those sticky, chewy candies, and make sure to brush your teeth well after eating any treats! And ALWAYS be safe while trick-or-treating. We'd love to see pictures of your funniest, scariest, wildest costumes – send them in and we'll put them up on our lobby bulletin board!



Ask Dr. Chen

Q: Why do I have to wear retainers after braces and how long do I have to wear them?

A: Retainers are for life! Teeth sit in the bone. Bone is a living body tissue that continually breaks down and builds up through normal body functions. Even without braces, your teeth will continue to move and shift throughout your whole life!



Emergency Appointments



Now that school is back in session, we have to remind all our patients about our emergency appointment policy. Anything other than a regular adjustment qualifies as an emergency. Since we make it a point to keep our afternoon schedule open for everyone to have regular appointments after school, we ask that any emergency appointments be booked by 2:45pm or earlier.

For the first 6-9 months after braces are removed, most patients should wear retainers full time – that means day and night! After that, wear-time is usually shortened to 12 hours a day. If your retainer ever feels tight when they're in your mouth, you might have to increase the wear-time, but always ask Dr. Chen!

Holiday Closings

Mark your calendars! Thanksgiving and Christmas are just around the corner.

Closed November 24-26

Closed December 23-24

Closed December 31

New Marlboro Office Hours starting January 2011

Mondays (every other): 8am-7pm

Tuesdays: 8am-5pm

Wednesdays (every other): 8am-7pm

Thursdays: 8am-5pm

Fridays: Closed

